

If something is troubling you, or you have questions or concerns about campus life, please contact the Tohoku University School of Engineering DEI Promotion Project.

### DEI Promotion Project Tohoku University School of Engineering

E-mail [eng-dei@grp.tohoku.ac.jp](mailto:eng-dei@grp.tohoku.ac.jp)

TEL 022-795-5678



In addition, each department has a female staff member you can talk to.

#### Department of Mechanical and Aerospace Engineering

**Prof. Mami Tanaka**

E-mail [mami.tanaka.e6@tohoku.ac.jp](mailto:mami.tanaka.e6@tohoku.ac.jp)

#### Department of Electrical, Information and Physics Engineering

**Prof. Madoka Ono**

E-mail [madoka.ono.d7@tohoku.ac.jp](mailto:madoka.ono.d7@tohoku.ac.jp)

#### Department of Applied Chemistry, Chemical Engineering and Biomolecular Engineering

**Prof. Naomi Shibasaki-Kitakawa**

E-mail [naomi.kitakawa.d3@tohoku.ac.jp](mailto:naomi.kitakawa.d3@tohoku.ac.jp)

#### Department of Materials Science and Engineering

**Prof. Chao-Nan Xu**

E-mail [chao-nan.xu.c8@tohoku.ac.jp](mailto:chao-nan.xu.c8@tohoku.ac.jp)

#### Department of Civil Engineering and Architecture

**Prof. Keiko Udo**

E-mail [keiko.udo.c1@tohoku.ac.jp](mailto:keiko.udo.c1@tohoku.ac.jp)



# DEI Promotion Project Tohoku University School of Engineering

Diversity

Equity

Inclusion

### Graduate School of Engineering DEI Promotion Project Logo

It expresses diversity by using the color purple, which symbolizes Tohoku University, and the colors that represent the five departments of the School of Engineering. The 'D' supports the 'E', which represents people standing at the starting line, 'I', moving forward together. The arrangement illustrates the equitable way in which we pursue our DEI promotion initiatives.

Tohoku University's school color  
five department's colors



**Diversity, Equity  
and Inclusion**

### Meet Zundanuki!

Mascot for the Association of Leading Women Researchers in Engineering (ALiCE)

The Zundanuki is a zunda (edamame)-colored tanuki (a Japanese raccoon dog) that lives in Acabayama. Its mouth forms the Japanese Kanji "I" for "engineering," and it has a pattern of the Japanese bush clover, featured in Tohoku University's logo on its belly.



Inquiries

DEI Promotion Project  
Tohoku University School of Engineering

TEL: 022-795-5678 E-mail: [eng-dei@grp.tohoku.ac.jp](mailto:eng-dei@grp.tohoku.ac.jp)

<https://dei.eng.tohoku.ac.jp/>



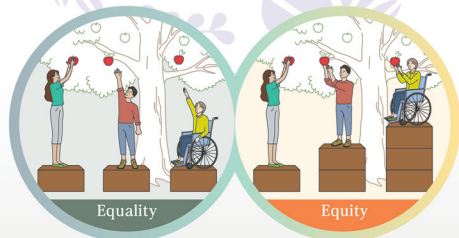
Revised February 2025

Tohoku University's School of Engineering is committed to fostering an open learning and work environment for all, regardless of gender, nationality, social position, or other attributes. This, in turn, allows everyone to fully demonstrate their abilities, enhances research, and increases innovation.

# Tohoku University Diversity, Equity, and Inclusion (DEI) Promotion Declaration

- April 2022 -

Tohoku University takes pride in bringing together diverse knowledge and in promoting **diversity, equity, and inclusion**, and continually strives to create new value that will contribute to a happier today and a better future.



## What do minorities mean to you?

The term 'minority' refers to a small group of people different from the main population. People can be minorities in learning and work environments, for example, due to their gender or nationality. Being part of a minority group can sometimes put one at a disadvantage and prevent one from fully demonstrating their abilities. Women are in the minority in science and engineering, while men are in the minority in nursing and childcare. Providing support to minorities is mandated by the United Nations and by Japanese law.

## Annual Events

April

Orientation for new students  
Social mixer for new first-year female students

Female Student Networking Events during lunch time (weeklong, all grades)

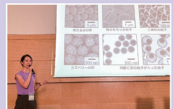


New Female Engineering Student Networking Party

May

'Rikejo Meeting No.1' event for junior and senior high school students and parents/guardians

Recruitment of university students for event support



Open Campus

July

'Open Campus Mini Forum: My Dream in Engineering' for junior and senior high school students and parents/guardians

Recruitment of university students for event support



August

'Rikejo Meeting No.2' event for junior and senior high school students and parents/guardians

Recruitment of university students for event support



October

Female Student Networking Events during lunch time (weeklong, all grades)

December

'Rikejo Meeting No.3' event for junior and senior high school students and parents/guardians

Recruitment of university students for event support



Rikejo (STEM Girl) Meeting

March

'Kogakubu in Tokyo' event for junior and senior high school students and parents/guardians

Recruitment of university students for event support



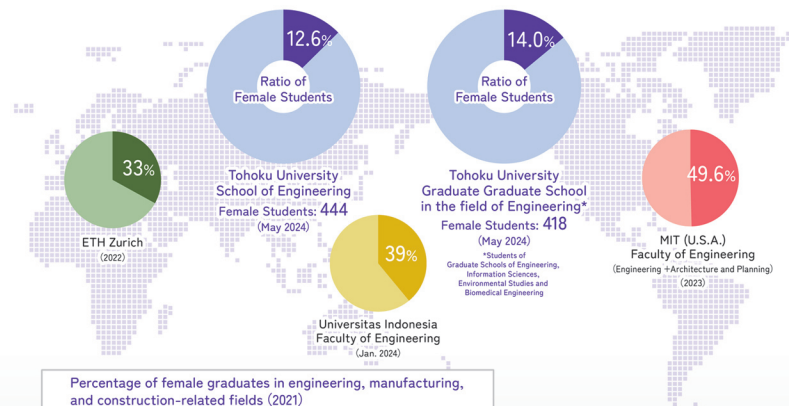
Tohoku University Kogakubu (Dept. of Engineering) in Tokyo

## Support for Female Students

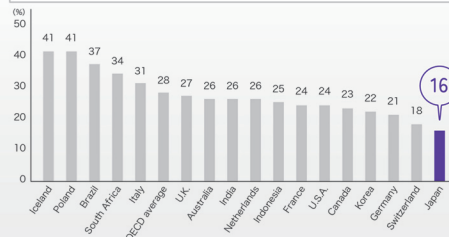
- Financial support for fees associated with participating domestic and international academic conferences, submitting and publishing papers, etc.
- Subsidy for taxi-use after the last train
- Nursery/resting rooms in each department



## DEI in Data



Percentage of female graduates in engineering, manufacturing, and construction-related fields (2021)



Source: OECD (2023), Education at a Glance 2023; OECD Indicators, OECD Publishing, Paris, <https://doi.org/10.1787/e1336f63-en243>.

We can see from the data that, although there are many female students in engineering globally, Japan has a different environment.

Everyone must work together to foster a diverse and rich environment.

We are involved in the events and support below.